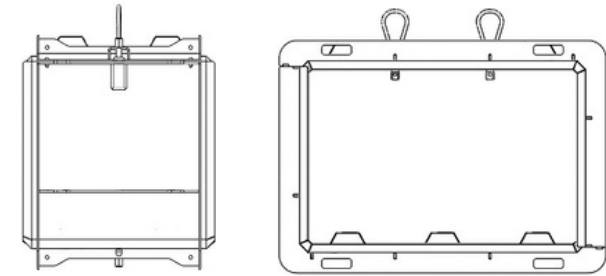
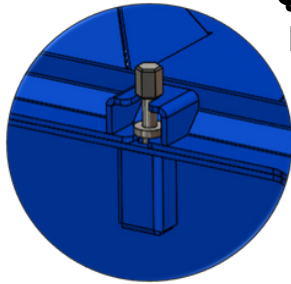


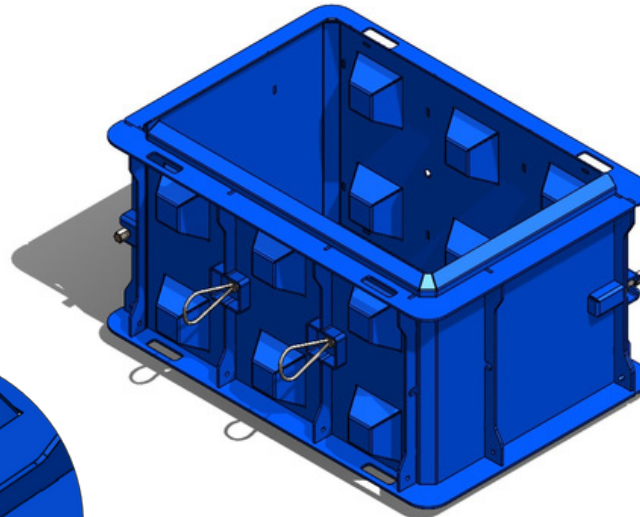
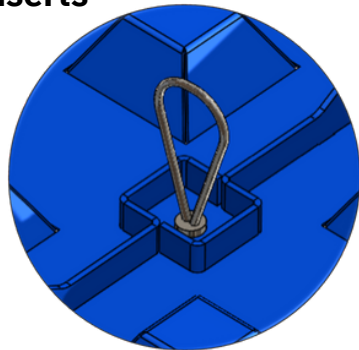
Multi Cup Block Moulds

**Quick Release System
For Splitting Moulds**

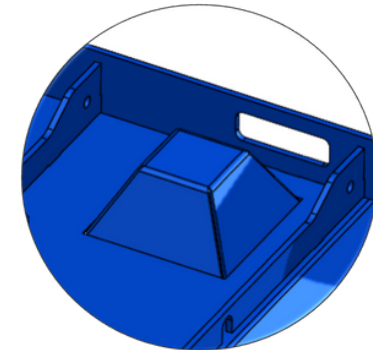


***See Table* L x 800W x 800H**

**Compatible With Concrete
Lifting Inserts**



**Interlocking Block
Design**



Compatible With:
Other Lego Blocks

Data for blocks produced from the moulds.

Mould No.	Size / mm	Mass / kg	Volume / m3	No. of Lifting Points
BML-800-1	800	1200	0.50	1
BML-1200-1	1200	1810	0.75	2
BML-1600-1	1600	2420	1.01	2
BML-2000-1	2000	3050	1.27	2

TYPICAL USES OF BLOCKS:

- § Storage Bays For Aggregates / Agricultural / Scrap Merchants,
- § Recycling Centres For Material Segregation,
- § Traffic Calming / Road Barrier,
- § To Provide Security Boundaries

Cabragh Engineering